



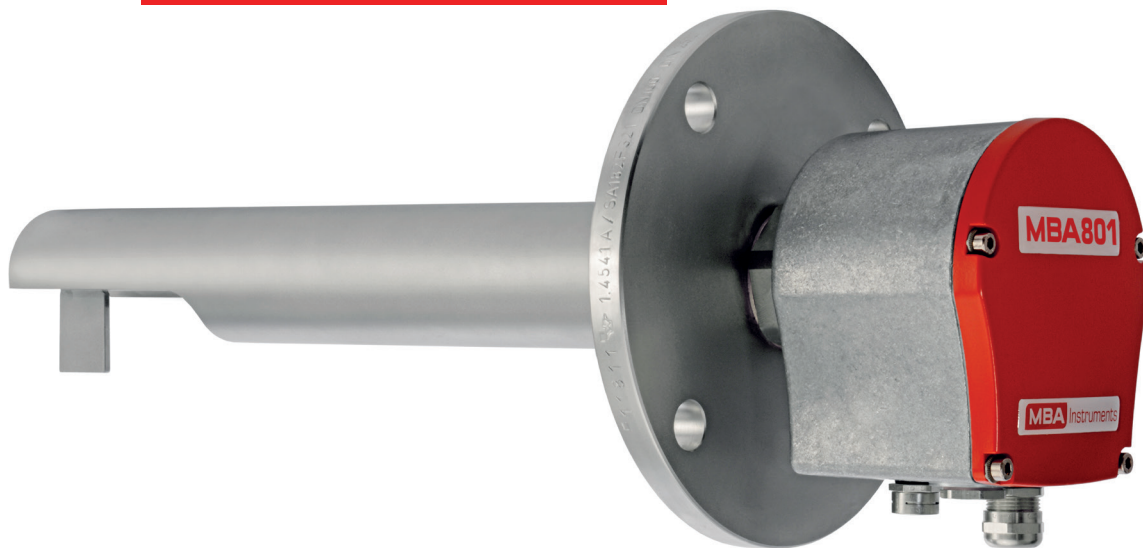
## LEVEL MEASURING DEVICE

SEMI ROTATING PADDLE PRODUCT SERIES MBA801

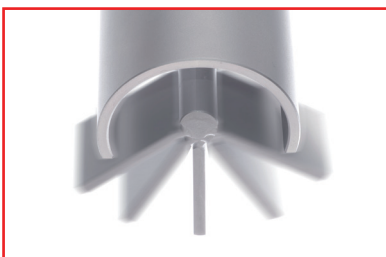


The digital semi rotating paddle,  
level detection switch for bulk material

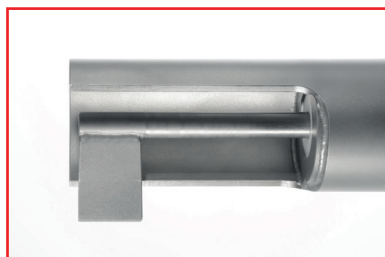
### MBA801 Halfpipe



- + *digital measurement technology*
- + *extremely robust construction*
- + *adjustable torque*
- + *ATEX certification*
- + *high system availability*



Swivelling range of 120 degrees



Paddle and shaft welded



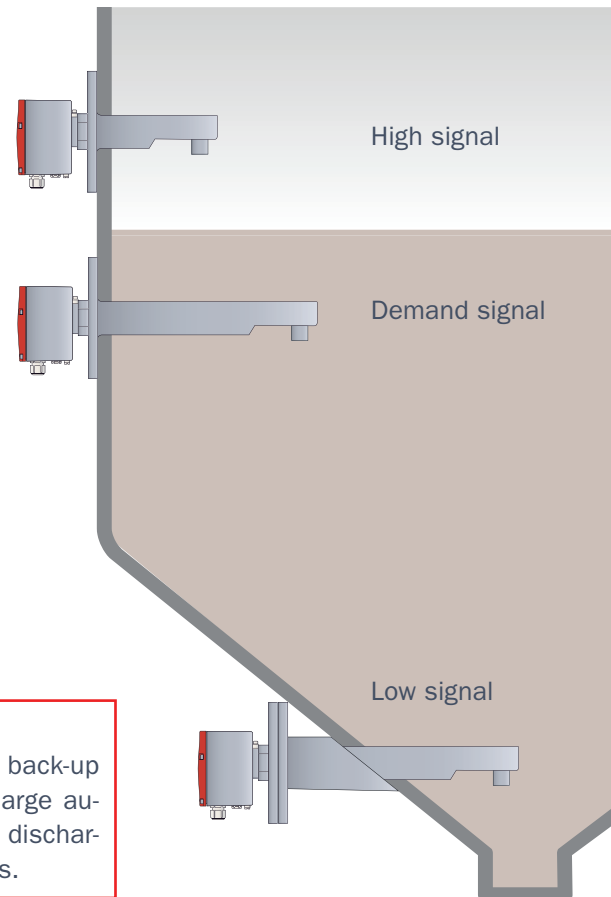
Robust, integrated protective cover

## The robust MBA801 Halfpipe supplements the rotating paddle detector series.

The new and digital semi rotating paddle – the MBA801 Halfpipe – measures directly in the falling flow of bulk material. The extra-strong shaft (12 mm shaft diameter) is mounted on a firmly welded paddle under a protective cover thereby making it perfectly protected against heavy or abrasive bulk material.

The paddle alternates below the protective cover by 120 degrees. The swiveling prevents material from becoming wrapped around the shaft or the paddle jamming and displaying incorrect messages. If the bulk material rises up in the silo and blocks the swinging paddle, then an electronic signal is emitted.

The Halfpipe is put at positions where a fill-level measurement has not been possible until now. The double sealing system protects the electronics against dust and moisture getting in, and with the ATEX certification, the level measuring devices are well equipped for zones prone to a dust explosion.



### Areas of application for almost any bulk materials:

as a high sensor, empty sensor or low sensor in the silo; back-up sensor in the downpipe; for measurement above discharge augers or similar conveyors; in transfer stations; below the discharge edge of conveyor belts and in many other applications.

### TECHNICAL DESCRIPTION OF THE VARIANTS

#### Operating Conditions

Ambient temperature:	-50 ... +60 °C (without ATEX)	-20 ... +50 °C (with ATEX)
Temperature in bin:	up to 500 °C	
Pressure in bin:	-0,5 ... +10 bar (air pressure based on the ambient pressure)	
Resistance to vibration:	tested up to 29g	
Housing protection class:	IP65 – water and dustproof for outdoor installation	

#### Product properties

	MBA811	MBA821
Supply voltage:	115 V ... 230 V AC	24 V DC (±10%)
Current consumption:	26 mA (6 VA) / 250 mA (6 W)	250 mA (6 W)
Signal generator:	Relay change-over contacts, potential-free contacts	Optical coupler as NO switch (NC)
Signal output:	loadable up to max.: 230 V 6A	loadable up to max.: 30 V DC 1,2 A
Torque:	Adjustable in 10 levels	
Housing:	Aluminium GD-ALSI12/3.2582.05/non-ferrous and therefore salt-water-proof	
Contact to product:	Steel or stainless steel 1.4305/other materials possible on request	
Seals:	VITON and PTFE/other materials possible on request	

#### Connection types:

Flange:	DN100 / PN6 and PN16; DN125 / PN6 and PN16 / threaded connector G 1½"
Immersion depths:	Up to max. 650 mm, other immersion depths possible on request