



## LEVEL MEASURING DEVICE

PRODUCT SERIES ROTATING PADDLE MBA888

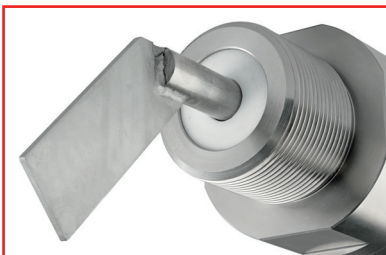


The digital rotating paddle,  
detection switch for bulk material

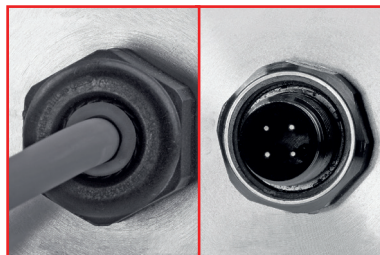
**MBA888**



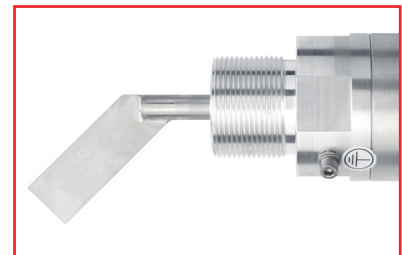
- + *Compact design*
- + *Universally applicable*
- + *ATEX certification*
- + *High system availability*
- + *Digital measurement technique*



Maintenance-free due to the completely closed design.



Two versions: connection with a cable or M12 connector.

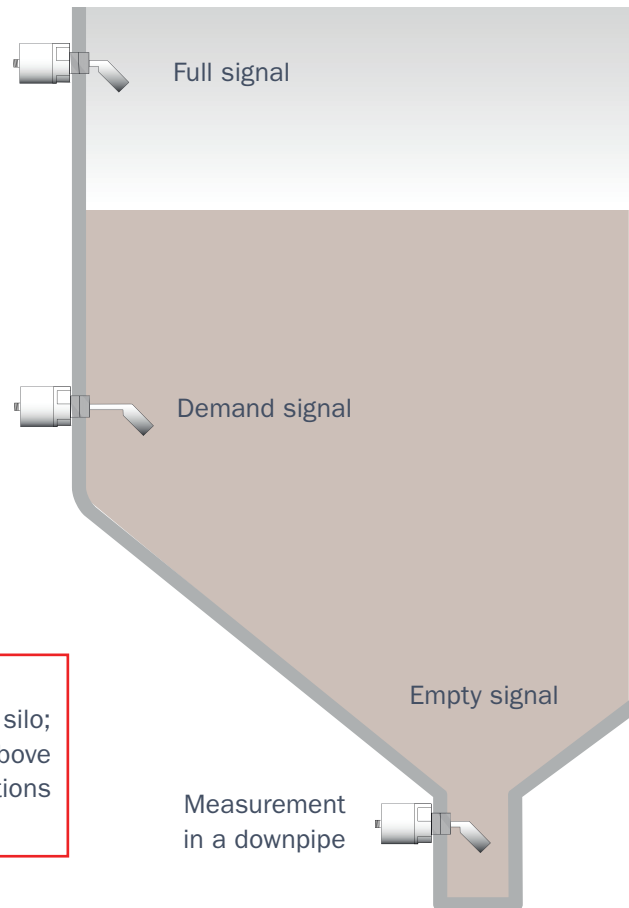


Welded and robust paddles provide a high level of system availability.

## MBA888: Maintenance-free fill-level measurement with a stepper motor

The plug-and-play version of the digital measuring device series is equipped with a stepper motor. The preset parameter set ensures extremely easy handling and optimum performance in almost all types of bulk material – independently of properties such as adhesive force, flow properties or bulk material density.

The housing of the device is completely closed so that dust or moisture cannot get inside. The design of the device is wear-free, enables maintenance-free operation and is not sensitive to shaking and vibrations. The device can be connected either with an M12 connector or a connecting cable.



**Areas of application for almost any bulk materials:**

as a full sensor, empty sensor or demand sensor in the silo; back-up sensor in the downpipe; for measurement above discharge augers or similar conveyors; in transfer stations or even in downpipes and many other applications.

**TECHNICAL DESCRIPTION OF THE VARIANTS**

**Operating Conditions**

Ambient temperature:	-50 ... +60 °C (without ATEX)	-20 ... +55 °C (with ATEX)
Temperature in the bin:	up to 80 °C	
Pressure in the bin:	-0,5 ... +10 bar (air pressure based on the ambient pressure)	
Vibration resistance:	certified up to 29g	
Housing protection class:	IP65 – water and dustproof for outdoor installation	

**Product properties**

Supply voltage:	115 V ... 230 V AC	24 V DC (±10 %)
Current consumption:	26 mA (6 VA)	90 mA without output load
Signal generator:	Relay change-over: potential-free contacts	Optical coupler: full or empty signal
Signal output:	loadable up to max.: 230 V / 6 A	loadable up to max.: 24 V DC 1,2 A

Housing:	Aluminium and stainless steel	
Components that contact product:	Stainless steel 1.4305	
Seals:	VITON and PTFE	
Switching behaviour:	with reversal of direction of rotation, switching time 6 sec. without reversal of direction of rotation, switching time 1 sec.	
Electrical connectors:	M12 connector, A-coded only for 24V version or 10m cable with open stranded wires	

**Connection types**

Connection:	Thread G 1 1/2"	
Immersion depths:	120 mm/180 mm/250 mm	