



CATALOGUE OF

ULAMEX STEEL WHOLESALERS

ABOUT OUR COMPANY

Ulamex steel wholesaler has been trying to meet the requirements and needs of customers for thirty years. Our company employs qualified employees who provide comprehensive customer service.

 Zawacia 144, Tomaszów Maz  bol@ulamex.com.pl

www.ulamex.com.pl



ULAMEX COMPANY

Ulamex steel wholesaler has been trying to meet the requirements and needs of customers for thirty years. Our company employs qualified employees who provide comprehensive customer service from placing an order to delivering the goods to the indicated place. The trust our customers have placed in us is a source of great joy and pride for us, because it is thanks to you, Dear Customers, that we can do what we love.

WHY YOU SHOULD CHOOSE US?



GUARANTEE OF
QUALITY



INDIVIDUAL
PRICES



PROFESSIONAL
CUSTOMER SERVICE



WIDE RANGE OF
PRODUCTS



DISCOUNTS FOR
REGULAR CUSTOMERS



OWN
TRANSPORT

HOW TO FIND US?



CONTACT

DIVISION OF BLACK STEEL stal-czarna@ulamex.com.pl
DIVISION OF GALVANIZED STEEL stal-ocynkowana@ulamex.com.pl
DIVISION OF STAINLESS STEEL AND ALUMINIUM stal-nierdzewna@ulamex.com.pl
PHOTOVOLTAICS DIVISION fotowoltaika@ulamex.com.pl

BLACK STEEL

PROFILES.....4
SECTIONS.....5
RODS6
SHEETS7

GALVANIZED STEEL

PROFILES.....8
FENCES.....9
WEMA GRATINGS AND PLATFORM STEPS.....10
WIRE AND BAND IRONS.....11

ALUMINIUM

SHEETS.....12
PROFILES.....13
PROFILES AND SECTIONS.....14
PIPES AND RODS.....15

STAINLESS STEEL

PROFILES.....16
SHEETS.....17
SECTIONS.....18
RODS.....19
PIPES.....20
OTHER.....21

PHOTOVOLTAICS

PV PROFILES.....22
ALUMINIUM CLAMPS AND OTHER.....23
HOOK GRIPS.....24-25
FASTENERS AND OTHER PARTS.....26-27



STEEL PROFILES

Length: 6000 mm

Dimension/Thickness	1,5	2,0	3,0	4,0
15 x 15	X			
20 x 20	X	X		
25 x 25		X	X	
30 x 10	X			
30 x 18		X		
30 x 20	X	X		
30 x 30	X	X	X	
35 x 35		X	X	
40 x 20	X	X	X	
40 x 27	X	X	X	
40 x 30	X	X	X	
40 x 40	X	X	X	X

Dimension/Thickness	1,5	2,0	3,0	4,0	5,0
50 x 20		X	X		
50 x 30	X	X	X		
50 x 40		X	X		
50 x 50		X	X	X	X
60 x 20	X	X	X		
60 x 30		X	X		
60 x 40	X	X	X	X	
60 x 60		X	X	X	X
70 x 70		X	X	X	X
80 x 20	X	X			
80 x 40		X	X	X	
80 x 60		X	X	X	
80 x 80		X	X	X	X
90 x 90			X	X	X
100 x 20	X	X			
100 x 40		X	X	X	
100 x 50		X	X	X	X
100 x 100		X	X	X	X
120 x 120			X	X	X
120 x 40		X	X	X	X
120 x 60		X	X	X	X
120 x 80			X	X	X
140 x 60			X	X	X
140 x 80			X	X	X
140 x 140			X	X	X
160 x 80			X	X	

*Other lengths available on request


COLD-FORMED C-CHANNELS

20x20x2	40x40x3	60x30x3	80x40x3
25x25x2	50x30x2	60x32x3	100x50x3
30x30x2	50x30x3	60x40x3	120x60x4
40x20x2	50x40x3	70x50x4	
40x40x2	50x50x3	80x15x2	

Length: 6000 mm

HOT-ROLLED C-CHANNELS

40x20	120	220
50x38	140	240
65	160	
80	180	
100	200	

Length: 6000 / 12000 mm


SEMI-CLOSED C-CHANNELS

80

Length: 6000 / 7000 / 8000 / 9000 / 12000 mm


T-BARS

25x25x3,5
30x30x4
40x40x5
50x50x6

Length: 6000 mm

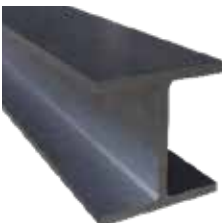

COLD-FORMED ANGLES

20x20x2	40x40x3
25x25x2	50x50x3
25x25x3	60x60x3
30x30x2	
40x40x2	

Length: 6000 mm

HOT-ROLLED ANGLES

20x20x3	45x45x4	100x100x10
25x25x3	50x50x5	
30x30x3	60x60x6	
35x35x4	70x70x7	
40x40x4	80x80x8	


DOUBLE T-BARS

80	180
100	200
120	220
140	240
160	

Length: 12000 mm

IPE

80	180
100	200
120	220
140	240
160	

HEB

100	200
120	220
140	240
160	
180	

HEA

100	200
120	220
140	240
160	
180	



FLAT BARS

Width/Thickness	4	5	6	8	10
20	X	X	X	X	X
25	X	X	X	X	X
30	X	X	X	X	X
35		X	X	X	X
40	X	X	X	X	X
50	X	X	X	X	X
60	X	X	X	X	X
70		X	X	X	X
80		X	X	X	X
100		X	X	X	X
120				X	X
150					X
200					X

Length: 6000 mm



SMOOTH BARS

6	28	65
8	30	70
10	32	75
12	35	80
14	36	85
16	38	90
18	40	95
20	42	100
22	45	110
24	50	120
25	55	
27	60	

Length: 6000 mm



RIBBED BARS

Length: 6000 / 12000 mm

6	14
8	16
10	18
12	20



SQUARE BARS

Length: 6000 mm

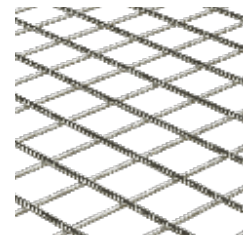
10	16
12	18
14	20



SMOOTH WIRE ROD

In the circle

5,5
6



MESH

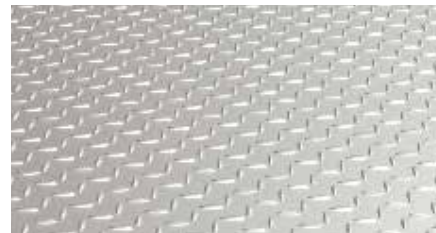
ZG 2000x10000x100x2,0
ZG 2000x10000x150x2,0


BLACK SHEET

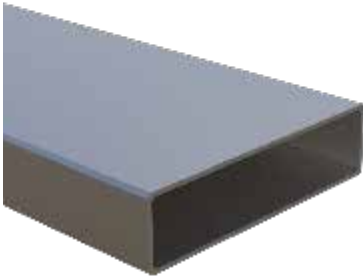
Thickness/Dim.	1000 x 2000	1250 x 2500	1500 x 3000
0,5	X	X	X
0,6	X	X	X
0,8	X	X	X
1,0	X	X	X
1,5	X	X	X
2,0	X	X	X
2,5	X	X	X
3,0	X	X	X
4,0	X	X	X
5,0	X	X	X
6,0	X	X	X
8,0	X	X	X
10,0	X	X	X
12,0	X	X	X
15,0	X	X	X
20,0	X	X	X


GALVANIZED SHEET

Thickness/Dim.	1000 x 2000	1250 x 2500	1500 x 3000
0,5	X		
1,0	X	X	X
1,5	X	X	X
2,0	X	X	X
3,0	X	X	X


SHEET TEAR

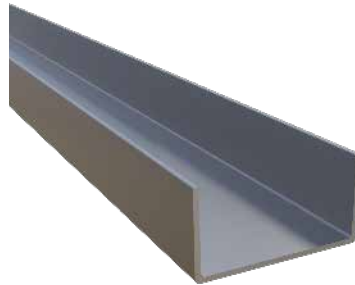
Thickness/Dim.	1000 x 2000	1250 x 2500	1500 x 3000
3,0	X	X	X
4,0	X	X	X
5,0	X	X	X



GALVANIZED PROFILES

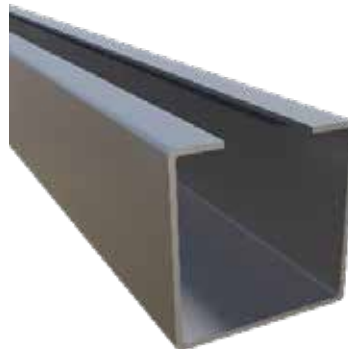
Material: Galvanized steel
Dimensions: Listed in the table

Dim./Thickness	1,25	1,50	2,00	3,00
20 x 20	X	X		
25 x 25	X			
30 x 20		X		
30 x 30		X	X	
40 x 20	X	X		
40 x 30	X	X	X	
40 x 40	X	X	X	
50 x 30		X	X	
50 x 50		X	X	
60 x 20	X			
60 x 40	X	X	X	X
60 x 60		X	X	
70 x 70			X	
80 x 20	X			
80 x 40			X	
80 x 60			X	
80 x 80			X	X
100 x 20	X			
100 x 40			X	
100 x 100			X	X
120 x 20	X			
120 x 40			X	
120 x 120				X
140 x 20	X			
160 x 20	X			



C-CHANNELS

Material: Galvanized steel
Heights: 20 / 25 / 35 / 40 mm
Widths: 20 / 35 / 40 mm
Thicknesses: 1,5 / 2 mm
Length: 6000 mm



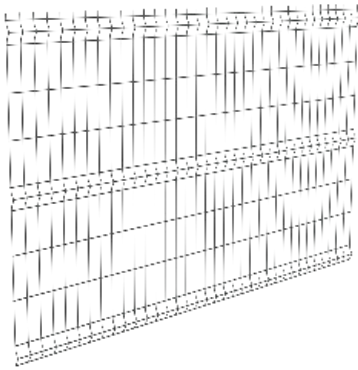
GATEWAY C-CHANNELS

Material: Galvanized steel
Heights: 80 mm
Widths: 80 mm
Thicknesses: 4 / 5 mm
Length: 6000 / 7000 / 8000 / 9000 mm



ANGLES

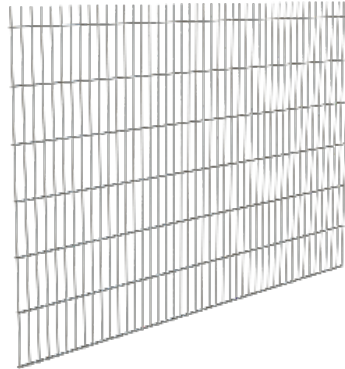
Material: Galvanized steel
Heights: 20 / 25 / 30 / 40 mm
Widths: 20 / 22 / 30 / 40 mm
Thicknesses: 2 / 3 mm
Length: 6000 mm



3D FENCE PANELS

Material: Galvanized steel
Colours: galvanized / graphite / black / green / brown

W x H / Thickness	4/4	5/5
1030 x 2500	X	X
1230 x 2500	X	X
1530 x 2500	X	X
1730 x 2500	X	X
2030 x 2500	X	X



2D FENCE PANELS

Material: Galvanized steel
Colours: graphite

W x H / Thickness	6/5/6
1230 x 2500	X
1430 x 2500	X
1630 x 2500	X
1830 x 2500	X
2030 x 2500	X



FENCE POSTS

Material: Galvanized steel
Dimension: 60 x 40 mm
Colours: galvanized / graphite / black / green / brown

Length / Thickness	1,25	1,50
2000	X	X
2200	X	X
2400	X	X
2600	X	X



CLAMPS FOR 3D PANELS

Material: Galvanized steel
Purpose: 40x60 mm post
Types: final, pass-through, corner
Colours: galvanized / graphite / black / green / brown



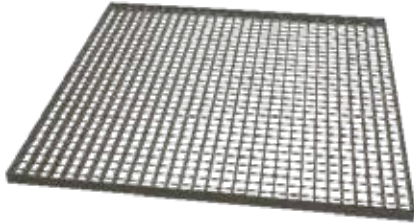
WICKETS

Material: Galvanized steel
Heights: 1200 / 1500 / 1700 mm
Width: 1000 mm
Included: all mounting elements
Colours: galvanized / graphite / black / green / brown
 * We also make customised wickets



GATES

Material: Galvanized steel
Heights: 1200 / 1500 / 1700 mm
Span width: 2000 mm
Overall width: 4000 mm
Included: all mounting elements
Colours: galvanized / graphite / black / green / brown
 * We also make customised gates



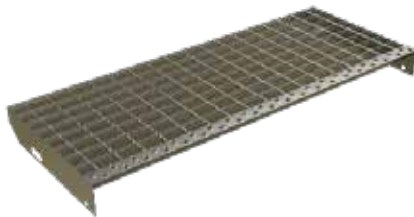
WEMA GRATINGS

Material: Galvanized steel

Mesh size: 34 x 38 mm

Zinc layer: conforms to PN-EN ISO 1461 : 2011

L x W / Flat bar	25x2	30x2
200 x 1000	X	X
240 x 1000	X	
250 x 1000	X	X
300 x 1000	X	X
400 x 600		X
400 x 1000	X	X
500 x 1000	X	X
600 x 1000	X	X
700 x 1000	X	X
800 x 1000	X	X
900 x 1000		X
1000 x 1000	X	X
1200 x 1000		X
1200 x 1200		X
1500 x 1000		X



WEMA PLATFORM STEPS

Material: Galvanized steel

Mesh size: 34 x 38 mm

Zinc layer: conforms to PN-EN ISO 1461 : 2011

L x W / Flat bar	25x2	30x2
600 x 240	X	X
600 x 270	X	
800 x 240	X	X
800 x 270	X	X
1000 x 240		X
1000 x 270		X
1200 x 270		X



TYING WIRES

Material: Black steel

0,8	1	1,2	1,4	1,6
2	2,5	3	4	



GALVANIZED WIRES

Material: Galvanized steel

0,8	1	1,2	1,4	1,6
2	2,5	3	3,5	4
5	6	7	8	



STEEL WIRES

Material: Black steel

2	2,5	3	4	5
---	-----	---	---	---



GALVANIZED BAND IRONS

Material: Galvanized steel

Thickness/ Width	20	25	30	40
2	X	X	X	
3	X	X	X	X
4		X	X	X



STEEL BAND IRONS

Material: Black steel

Thickness/ Width	20	25	30	40	50
2	X		X		
3		X	X	X	X



CONSTRUCTION NAILS

Size	Black	Galvanized
2,8 x 65	X	
3,0 x 70	X	
3,0 x 80	X	X
3,5 x 90	X	
4,0 x 100	X	X
4,5 x 125	X	X
5,0 x 150	X	X
6,0 x 175	X	X
8,0 x 250		X
8,0 x 300		X

*The offer also includes: ring nails
(black and galvanized),

torsion nails
(black and galvanized)



SMOOTH SHEETS

Material: Aluminium

Types: 5754 / 1050

*Other dimensions available on request

TYPE 5754 - H111/H22

Dimension/Thickness	1,50	2,00	2,50	3,00	4,00	5,00	6,00	8,00
1000 x 2000				X	X	X	X	
1250 x 2500	X	X		X	X	X	X	X
1500 x 3000	X	X	X	X	X			X

TYPE 1050

Dimension/Thickness	0,50	1,00	1,50	2,00	2,50	3,00
1000 x 2000	X	X	X	X		X
1250 x 2500		X	X	X		X
1500 x 3000		X	X	X	X	X



ENGRAVED SHEETS

Material: Aluminium

Types: 5754 / 1050

*Other dimensions available on request

TYPE 5754

Dimension/Thickness	3,00	4,00
1000 x 2000	X	X
1250 x 2500	X	X
1500 x 3000	X	X

TYPE 1050

Dimension/Thickness	0,90	2,00	3,00
1000 x 2000	X	X	X
1250 x 2500		X	X
1500 x 3000		X	X



ALUMINIUM PROFILES

Material: Aluminium

Length: 6000 mm

Types: PA38

*Other dimensions available on request

Dimension/Thickness	1,50	2,00	3,00	4,00
20 x 10		X		
20 x 20	X	X		
25 x 15		X		
25 x 25	X	X		
30 x 10		X		
30 x 20		X	X	
30 x 30		X	X	
40 x 20		X	X	
40 x 30		X	X	
40 x 40		X	X	X
50 x 20		X		

Dimension/Thickness	1,20	1,30	1,50	1,60	2,00	3,00	4,00	5,00
50 x 25					X			
50 x 30					X	X		
50 x 50					X	X	X	X
60 x 20	X		X		X			
60 x 25						X		
60 x 30					X	X		
60 x 40					X	X	X	
60 x 60					X	X	X	
80 x 20		X			X			
80 x 30						X		
80 x 40					X	X	X	
80 x 80					X	X		
100 x 20	X		X		X			
100 x 25					X			
100 x 30					X			
100 x 40					X	X		
100 x 50					X	X	X	X
100 x 100					X		X	
120 x 20			X		X			
120 x 40					X		X	
120 x 50							X	
150 x 20					X			
180 x 50							X	
250 x 20					X*			
200 x 20					OXY			
200 x 100							X	

Length: O - 5000 mm / X - 6000 mm / Y - 7000 mm

* Reinforced



GATE PROFILES

Material: Aluminium
Length: 6000 / 7000 / 8000 mm
Type: PA38



FASTENING PROFILES + CAP

Material: Aluminium
Size: 40x40 mm
Length: 6000 mm
Type: PA38



C-CHANNELS

Material: Aluminium
Type: PA38
Length: 6000 mm

*Other dimensions available on request

8x8x1	30x30x2	60x40x3
12x12x2	30x30x3	60x40x4
15x15x15x2	40x20x2	60x40x5
20x20x2	40x30x3	70x40x3
25x25x25x2	40x40x3	80x40x5
25x25x25x3	40x40x5	100x50x5
30x20x2	50x50x5	140x60x7



ANGLES

Material: Aluminium
Type: PA38
Length: 6000 mm

*Other dimensions available on request

15x15x2	30x30x2	50x50x2	60x60x6
20x10x2	30x30x3	50x50x5	80x20x2
20x20x2	40x20x2	60x30x3	100x50x3
25x20x2	40x40x2	60x40x2	100x50x5
25x25x2	40x40x3	60x40x3	100x100x6
30x20x2	40x40x4	60x40x5	140x40x3
30x20x3	50x20x2	60x60x2	160x50x3



SMOOTH BARS

Material: Aluminium
Types: PA38 / PA6
 *Other dimensions and types available on request

TYPE PA38

8	12	25
10	20	50
16	35	55

Length: 6000 mm

TYPE PA6

20	35	50	130
22	30	80	
25	45	100	

Length: 3000 mm



SQUARE BARS

Material: Aluminium
Types: PA38 / PA6
 *Other dimensions and types available on request

TYPE PA38

10x10
15x15
20x20

Length: 6000 mm

TYPE PA6

20x20	50x50
30x30	80x80
35x35	

Length: 3000 mm



PIPES

Material: Aluminium
Length: 6000 mm
Type: PA38
 *Other dimensions available on request

TYPE PA38

12x1	25x2	32x2	40x3	50x3	60x4	80x2
12x1,5	25x3	35x2	40x4	50x4	60x5	80x5
20x3	30x2	35x3	40x5	60x2	70x2	150x5
25x1,5	30x3	40x2	50x2	60x3	70x3	



FLAT BARS

Material: Aluminium
Types: PA38 / PA4 / PA6
 *Other dimensions available on request

TYPE PA38

20x2	25x5	30x5	50x4	70x15	120x10	150x10
20x5	30x2	30x10	50x5	70x30	120x15	
20x10	30x3	40x3	60x10	80x8	120x20	
25x3	30x4	40x10	60x20	100x10	150x8	

Length: 6000 mm

TYPE PA6

50x30
200x30

Length: 3000 mm

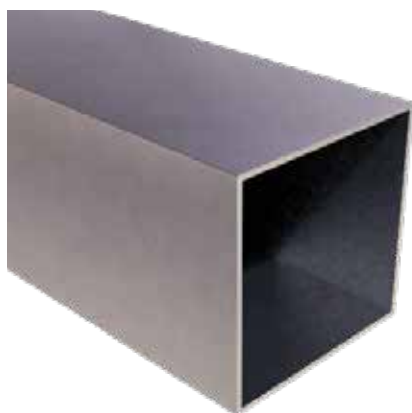


T-BARS

Material: Aluminium
Length: 6000 mm
Type: PA38

TYPE PA38

20x20x2
100x50x2



PROFILES

Material: Stainless steel

Length: 6000 mm

Type: 304

*Other dimensions and types available on request

Size	Wall	Finishing
10x10	1	XS
15x15	1,5	XSP
20x10	1,5	P
20x20	1,5	XSP
	2	X
25x10	1,5	X
25x15	1,5	X
25x25	1,5	XSP
	2	X
	3	X
	3	X
30x10	1,5	SP
30x15	1,5	XSP
	2	X
30x20	1,5	XSP
	2	X
30x30	1,5	XSP
	2	XP
	3	X

X: raw S: grinding P: polishing

Size	Wall	Finishing
35x35	2	X
40x10	1,5	XSP
40x15	1,5	X
	2	XS
40x20	1,5	XSP
	2	XS
	3	X
40x30	1,5	X
	2	X
40x40	1,5	SP
	2	XSP
	3	X
45x45	2	X
50x10	1,5	SP
50x20	1,5	X
	2	SP
50x25	1,5	X
	2	X
50x30	1,5	XSP
	2	XSP
	3	XS
50x40	2	X
50x50	1,5	X
	2	XSP
	3	X
60x10	1,5	S
60x20	2	XS
60x30	1,5	S
	2	XS
	3	X

X: raw S: grinding P: polishing

Size	Wall	Finishing
60x40	1,5	P
	2	XSP
	3	X
60x60	1,5	P
	2	XS
80x20	1,5	P
	2	X
80x40	1,5	S
	2	XSP
	3	X
80x50	3	X
80x60	2	X
80x80	2	X
100x20	2	S
100x50	2	X
100x100	2	XS
120x60	4	XS
200x100	3	X

X: raw S: grinding P: polishing

SMOOTH SHEETS



Material: Stainless steel

Types: 304 / 316L / H17

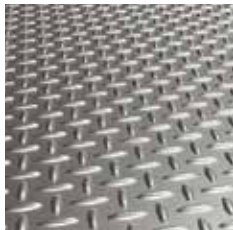
*Other dimensions and types available on request

Area	Type	Thickness	Format	Finishing
1D hot rolled	304	8	1500x3000	X
		10	1000x2000	X
			1500x3000	X
	316L	6	1000x2000	X
2B cold rolled	304	0,5	1000x2000	XP
			1250x2500	X
		0,6	1000x2000	XS
			1250x2500	XSP
		0,8	1000x2000	XSP
			1250x2500	XSP
			1500x3000	XSP
		1	1000x2000	XSP
			1250x2500	XSP
			1500x3000	XSP
		1,2	1000x200	X
			1250x2500	X
		1,5	1000x2000	XS
			1250x2500	XSP
			1500x3000	XSP

X: raw S: grinding P: polishing O: canvas

Area	Type	Thickness	Format	Finishing	
2B cold rolled	304	2	1000x2000	XS	
			1250x2500	XS	
			1500x3000	XS	
		2,5	3	1250x2500	XP
				1000x2000	X
		3	1250x2500	X	
			1500x3000	XP	
			2000x4000	X	
		4	4	1000x2000	X
				1250x2500	X
		5	5	1250x2500	X
				1500x3000	X
	316L	316L	0,5	1250x2500	X
			1,5	1000x2000	XS
			2	1250x2500	X
	H17	H17	0,6	1000x2000	P
				1250x2500	P
			0,8	1250x2500	P
				1000x2000	P
				1250x2500	P
			1,5	1,5	1250x2500
1500x3000					P
3			3	1250x2500	P
				1000x2000	P

X: raw S: grinding P: polishing O: canvas



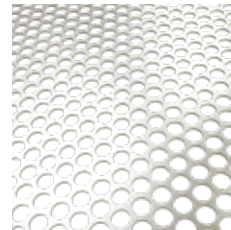
ENGRAVED SHEETS

Material: Stainless steel

Type: 304

*Other dimensions and types available on request

Dim./Thickness	2	3	4	5	6
1000 x 2000	X	X	X	x	
1250 x 2500	X	X	X	x	
1500 x 3000			X	x	X



PERFORATED SHEETS

Material: Stainless steel

Type: 304

Formula: RV or QG

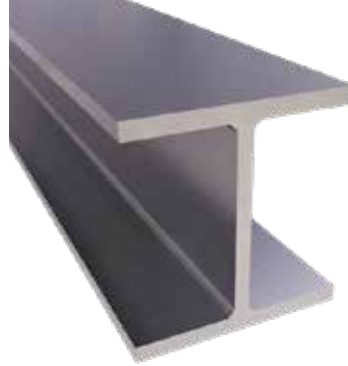
*Available on request



C-CHANNELS

Material: Stainless steel
Length: 6000 mm
Type: 304
*Other dimensions available on request

50x38x5	100x50x5
60x40x6	120x60x5
80x45x5	160x65x7



DOUBLE T-BARS

Material: Stainless steel
Length: 6000 mm
Type: 304
*Available on request



ANGLES

Material: Stainless steel
Length: 6000 mm
Type: 304
*Other dimensions and types available on request

20x10x3	45x45x5	60x60x6	100x100x6
20x20x3	50x30x4	80x65x8	100x100x8
25x25x3	50x50x4	80x80x8	100x100x10
30x30x3	50x50x5	90x60x6	120x80x8
35x35x4	50x50x6	100x50x6	
40x40x4	60x40x5	100x65x7	



SQUARES

Material: Stainless steel
Length: 4000 mm
Type: 304
 *Other dimensions and types available on request

6x6	12x12	25x25	50x50
8x8	15x15	30x30	
10x10	20x20	40x40	



FLAT BARS

Material: Stainless steel
Length: 4000 mm
Type: 304
 *Other dimensions and types available on request

15x3	25x5	35x8	50x10	100x5	150x20
15x4	25x6	40x4	60x3	100x6	
15x5	25x8	40x5	60x4	100x8	
20x3	25x10	40x6	60x10	100x10	
20x4	30x3	40x10	60x12	100x20	
20x5	30x4	50x3	60x25	100x25	
20x6	30x5	50x4	80x5	120x6	
20x8	30x6	50x5	80x6	150x5	
25x3	35x4	50x8	80x10	150x20	

Material: Stainless steel
Length: 4000 mm
Type: H17
 *Other dimensions and types available on request

30x3	30x5
------	------



RODS

Material: Stainless steel
Length: 3000 mm
Type: 304
 *Other dimensions and types available on request

3	14	32	70
4	15	35	80
5	17	36	85
6	18	40	90
7	20	45	110
8	22	50	120
10	24	55	130
12	25	60	
13	30	65	

Available rods: fi 10 polishing,
 fi 12 polishing.



HEXAGONAL BAR

Material: Stainless steel
Length: 3000 mm
Type: 304
 *Other dimensions and types available on request

10	17	22	41
13	19	27	



PIPES

Material: Stainless steel

Length: 6000 mm

Type: 304

*Other dimensions and types available on request

Size	Wall	Finishing
6	1	X
8	1	X
10	1	X
	1,5	SP
12	1	XS
	1,5	SP
	2	XP
14	1,5	SP
15	1,5	X
16	1	XS
	1,5	SP
	2	X
17,2	2	X
18	1	X
	1,5	XSP
20	1,5	SP
	3	X
21,3	2	SP
	2,6	X
	3	X
22	1,5	X
	2	S
25	1,5	SP
	2	XS
	2,5	X
	3	X
26,9	2	XP
	2,6	XP
28	1,5	X
30	1,5	XSP
	2	P
32	2	P

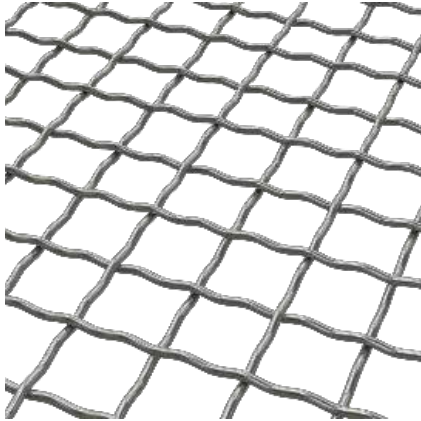
X: raw S: grinding P: polishing

Size	Wall	Finishing
33,7	1,5	X
	2	X
	2,6	X
	3	X
35	1,5	X
	3	S
38	1,5	P
	2	XP
40	1	X
	1,5	XS
	2	XSP
42,4	1,5	SP
	2	XSP
	2,6	X
	3	X
	3,2	P
45	4	X
	2	S
	2	P
48,3	1,5	P
	2	XSP
	3	X
	4	X
50	1	X
	3	S
50,8	1,5	SP
	2	XP
52	1	X
	1,5	X
54	2	X
60,3	1,5	XSP
	2	XSP
	3	X

X: raw S: grinding P: polishing

Size	Wall	Finishing
60,3	3,6	X
	4	S
63,5	1,5	X
70	1,5	X
	2	X
76,1	2	XSP
	3	X
	3,6	X
80	2	X
85	2	X
88,9	2	XSP
101,6	2	X
	3	X
104	2	X
108	2	X
114,3	2	X
	4	X
154	2	X
156	3	X
204	2	X
508	3	X

X: raw S: grinding P: polishing



CORRUGATED SIEVE

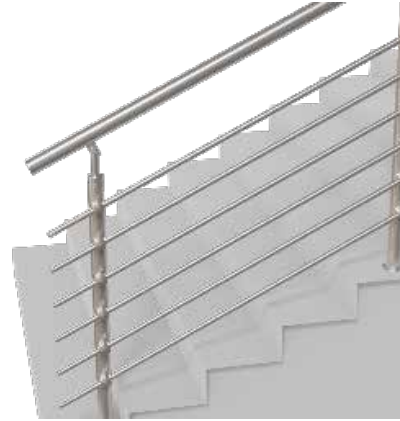
Material: Acid-resistant steel

Type: 304

Wire thickness: fi 1,4 / 1,6 / 2,0 / 2,5 / 4,0

Eye: 9x9 / 10x10 / 15x15 / 20x20 / 35x35 mm

*Other dimensions available on request



COMPONENTS FOR RAILINGS

Material: Acid-resistant steel

Type: 304

Range of products: posts for railings, mounting plates, door handles and many other



BUSHING

Material: Acid-resistant steel

Type: 304

*Other dimensions available on request



FASTENERS

Material: Acid-resistant steel

Type: 304/316L

Range of products: bolts, nuts, screws and many more



FITTINGS

Material: Acid-resistant steel

Type: 304/316L

Range of products: elbows, nipples, joints and many more



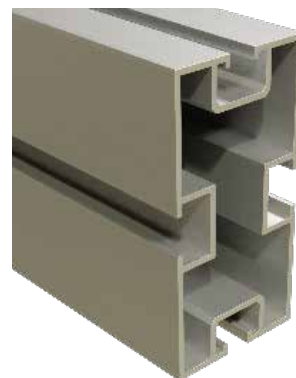
PV PROFILES

Material: Aluminium
Height: 40 mm
Width: 40 mm
Length: 2220 - 6600 mm
Upper channel: M8 DIN 557/934 A2 nut
Lower channel: M10 DIN 933 A2 bolt



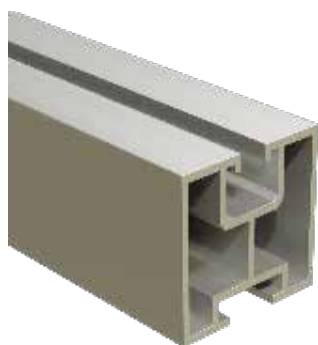
ANODIZED PV PROFILES

Material: Aluminium
Height: 40 mm
Width: 40 mm
Length: 2220 - 6600 mm
Upper channel: M8 DIN 557/934 A2 nut
Lower channel: M10 DIN 933 A2 bolt
Colour: black



80X40 PROFILE

Material: Aluminium
Height: 80 mm
Width: 40 mm
Length: 4300 mm / 6210 mm
Upper channel: sliding inlet with M8 ball
Lower channel: M10 DIN 933 A2 bolt



HAMMER PV PROFILES

Material: Aluminium
Height: 40 mm
Width: 40 mm
Length: 2220 - 6600 mm
Upper channel: sliding inlet with M8 ball
Lower channel: hammer bolt



ANODIZED HAMMER PV PROFILES

Material: Aluminium
Height: 40 mm
Width: 40 mm
Length: 2220 - 6600 mm
Upper channel: sliding inlet with M8 ball
Lower channel: hammer bolt
Colour: black



TRAPEZOIDAL PROFILES AND BRIDGES

Material: Aluminium
Height: 40 / 70 / 100 mm
Width: 114 mm
Length: 330 / 400 mm
Upper channel: M8 DIN 557/934 A2 nut
Lower channel: self-drilling head screw 6.0x25 bi-metal with 16 washer



MIDDLE ALUMINIUM CLAMPS

Material: Aluminium
Height: 24,3 mm
Width: 36 mm
Length: 50 mm
Fastening: DIN 912 A2 allen bolt



ANODIZED ALUMINIUM MIDDLE CLAMPS

Material: Aluminium
Height: 24,3 mm
Width: 36 mm
Length: 50 mm
Fastening: DIN 912 A2 allen bolt
Colour: black



ALUMINIUM ANGLES

Material: Aluminium
Height: 40 mm
Width: 40 mm
Thickness: 3 / 4 mm
Length: 6000 mm



END ALUMINIUM CLAMPS

Material: Aluminium
Outer height: 33 / 34,8 / 37,8 / 42,3 mm
Inner height: 30 / 32 / 35 / 40 mm
Width: 26,8 mm
Length: 50 mm
Thickness: 2,8 mm
Fastening: DIN 912 A2 allen bolt



ANODIZED END ALUMINIUM CLAMPS

Material: Aluminium
Outer height: 33 / 34,8 / 37,8 / 42,3 mm
Inner height: 30 / 32 / 35 / 40 mm
Width: 26,8 mm
Length: 50 mm
Thickness: 2,8 mm
Fastening: DIN 912 A2 allen bolt
Colour: black



CONNECTOR FOR MOUNTING RAILS

Material: Aluminium
Outer height: 25 mm
Inner height: 22,5 mm
Outer width: 45 mm
Inner width: 40 mm
Length: 100 mm
Thickness: 2,8 mm
Fastening: M10 bolt



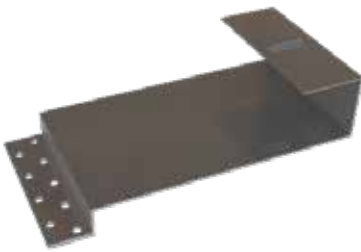
ADJUSTABLE HOOK HOLDER FOR TRAPEZE

Material: H17 stainless steel
Height: adjustable
Width: 20-70 mm
Length: 100 mm
Thickness: 2 / 3 mm
Fastening: Bi-metal self-drilling screw



DOUBLE ADJUSTABLE HOOK HOLDER ON THE ANGLE

Material: H17 stainless steel
Height: adjustable
Width: 30 mm
Length: 120 / 150 mm
Thickness: 4 mm
Fastening: Torx wood screw



WIDE CARP HOOK BRACKET

Material: H17 stainless steel
Height: 40 mm
Width: 135 mm
Length: 300 mm
Thickness: 2 mm
Fastening: M8, M10



HOOK BRACKET FOR THE SEAM

Material: H17 stainless steel
Height: adjustable
Width: 40 mm
Length: 90 / 110 mm
Thickness: 3 / 4 mm
Fastening: M10



J-GONT HOOK BRACKET

Material: H17 stainless steel
Height: 80 mm
Width: 30 mm
Length: 230 mm
Elongated hole: 2x23x11 mm
Fastening: M8, M10



S450 HOOK BRACKET

Material: H17 stainless steel
Height: 145 mm
Width: 30 mm
Length: 450 mm
Thickness: 4 mm
Fastening: M8, M10



S450 ADJUSTABLE HOOK HANDLE

Material: H17 stainless steel
Height: adjustable
Width: 30 mm
Length: 450 mm
Thickness: 4 mm
Fastening: M8, M10



S470 HOOK BRACKET

Material: H17 stainless steel
Height: 130 mm
Width: 25 mm
Length: 469 mm
Thickness: 4 mm
Elongated hole: 40x10 mm
Fastening: M8



S470 ADJUSTABLE HOOK HANDLE

Material: H17 stainless steel
Height: adjustable
Width: 25 mm
Length: 469 mm
Thickness: 4 mm
Elongated hole: 40x10 mm
Fastening: M8, M10



S500 HOOK BRACKET

Material: H17 stainless steel
Height: 145 mm
Width: 30 mm
Length: 500 mm
Thickness: 4 mm
Fastening: M8



S500 ADJUSTABLE HOOK HANDLE

Material: H17 stainless steel
Height: adjustable
Width: 30 mm
Length: 500 mm
Thickness: 4 mm
Fastening: M8



S530 HOOK BRACKET

Material: H17 stainless steel
Height: 130 mm
Width: 25 mm
Length: 529 mm
Thickness: 4 mm
Elongated hole: 40x10 mm
Fastening: M8, M10



ADJUSTABLE CARP HOOK BRACKET

Material: H17 stainless steel
Height: adjustable
Width: 30 mm
Length: 380 mm
Thickness: 4 mm
Fastening: M8, M10



SET SQUARES - PV TRIANGLES

Material: Aluminium

Degrees	Direction	Cross-section	Dimension
15	vertical	40x40x3	1594x1540x410
15	horizontal	40x40x3	1200x1150x300
30	horizontal	40x40x3	1110x961x555
30	vertical	40x40x4	1500x1295x746

SET SQUARES - ADJUSTABLE

Material: Aluminium

Direction	Cross-section	Dimension
vertical	40x40x4	1550x1340
horizontal	40x40x4	1000x880



DOUBLE THREADS

Material: Stainless steel

Dimension: M10x200 / M10x250 / M10x300 / M12x400 mm



FLANGE NUT DIN 6923 SERRATED

Material: A2 stainless steel

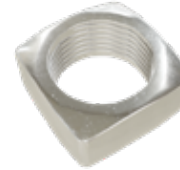
Size: M8, M10



DIN 934 HEXAGON NUT

Material: A2 stainless steel

Holes diameter: M8, M10



DIN 557 SQUARE NUT

Material: A2 stainless steel

Size: M8, M10



DIN 912 ALLEN BOLT

Material: A2 stainless steel

Dimension: M8x20 / M8x25 / M8x30 / M8x35 / M8x40



DIN 933 METRIC SCREW

Material: A2 stainless steel

Dimension: M8x20 / M8x25 / M8x30 / M8x40 / M8x45 / M10x20 / M10x25 / M10x30 / M10x40



HAMMER BOLT

Material: A2 stainless steel

Dimension: M10x25 / M10x30



DIN 603 LOCK SCREW

Material: A2 stainless steel

Dimension: M10x20 / M10x25



TORX WOOD SCREW

Material: Stainless steel
Dimension: 6x60 / 6x80 / 8x60 / 8x80



MOUNTING PLATE

Material: Stainless steel
Height: 11 mm
Width: 30 / 40 mm
Length: 80 / 82 mm
Thickness: 4 / 5 mm
Fastening: M8 bolt, M10 bolt



THREADED PLATE

Material: H17 stainless steel
Fastening: M8 bolt



GROUNDING PLATE

Material: Stainless steel



EPDM WASHER

Height: 13 mm
Diameter: 25 mm
Hole: 8,8 mm



DIN 9021 ENLARGED WASHER

Material: H17 stainless steel
Size: M8, M10



DIN 125 PLAIN WASHER

Material: Stainless steel
Dimension: M8, M10



BI-METAL SELF-DRILLING SCREW

Material: Stainless steel
Dimension: 6x25
Washer: 16 mm



DC SANDWICH PANEL SCREW

Material: Stainless steel
Length: 230 mm



SLIDING INLET WITH M8 BALL

Material: Aluminium and stainless steel
Size: M8



END CAP FOR MOUNTING RAIL

Material: plastic
Colour: black / grey



RELIABLE SINCE 1988

CONTACT US

- ✉ stal-azarna@ulamex.com.pl
- ✉ stal-ocynkowana@ulamex.com.pl
- ✉ stal-nierdzewna@ulamex.com.pl
- ✉ fatowoltaika@ulamex.com.pl

www.ulamex.com.pl